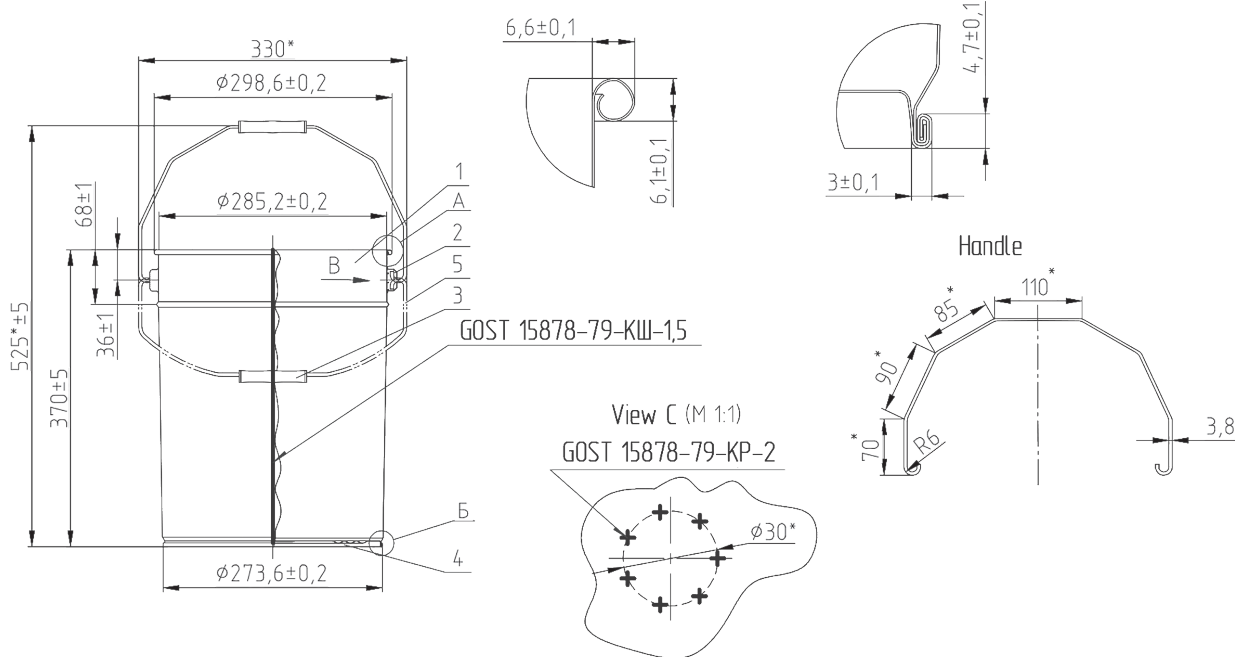
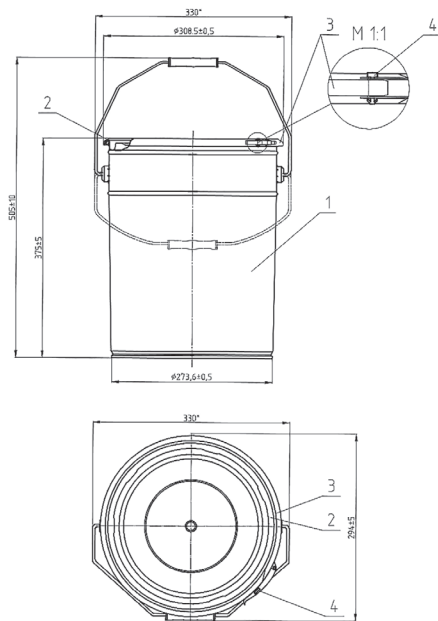


# UN PAIL Ø286mm



\*Sizes as a reference

Welded seam

Position of the welded seam relative to the "ears" - upon agreement with the client

Protection of the welded seam in the inner side (in the case of packaging with an internal coating) - white seam

powder based on polyester compounds

Protection of the welded seam in the outer side - Varnish external seaming

Protection of the welding points of the "ears" (in the case of packaging with an internal coating) - a two-component varnish to protect the welds

Designation	Quantity of rows on pallet	Quantity per pallet (1 200*800 mm), pcs		Height of pallet, mm		Height of pallet, mm
		Quantity	TOTAL weight, kg	Quantity	TOTAL weight, kg	
Ø 286 20 286L Y1,4 Lug lid	24	288	≈ 384	264	≈ 350	2188 ± 20
Ø 286 20L Y2 Lug lid	19	228	≈ 310	209	≈ 287	2140 ± 20
Ø 286 20L Y2 Ring latch lid	19	228	≈ 310	209	≈ 287	2140 ± 20
Ø 286 23L Y1,8 Ring latch lid	19	228	≈ 331	209	≈ 305	2183 ± 20
Ø 286 25L Y1 Ring latch lid	18	216	≈ 353	198	≈ 326	2130 ± 20